

## ZHONGZHOU GROUP INTRODUCTION

Zhongzhou Group is located in Shajiabang, Changshu City, an important textile town in China. It is 1.5 hours driving from Shanghai Hongqiao Airport, and 0.5 hour driving from Suzhou North station. The transportation is quite convenient.



Zhongzhou Enterprise was established in July 2005, focusing on providing customers with sports knitted fabrics and clothing supply chain supporting services, has developed into an integrated enterprise integrating research and development, production, inspection and trade. The company's Suzhou Olive Branch Textiles Co., Ltd. has a professional precision knitting and technology composite processing and production base, with an annual production and processing volume of more than 10,000 tons , and annual sales are around \$40 million.



Fabrics China

## 国家针织防寒服面料产品开发基地

Fabrics China Pioneer Plant-Knitted Fabric for Cold-proof Garment

中国纺织工业联合会  
中国纺织信息中心  
国家纺织产品开发中心



The company attaches great importance to the construction of brand customers, and has successively passed Oeko-tex® Standard 100 European green environmental protection product certification, and GRS environmental protection yarn certification. And in July 2014, it was evaluated by the National Textile Product Development Center and awarded the "National Knitted Winter Clothing Fabric Product Development Base", and the product has won the Excellence Award of China International Fabric Competition for many times.



# ENTERPRISE HONOR



As the governing unit of China Textile Industry Association, Zhongzhou enterprise has obtained the certificate of Chinese fashion trend fabric and ecological environmental protection fabric for many times, and obtained a number of patent certificates.





# COOPERATION BRAND





# ENTERPRISE EQUIPMENT (KNITTING FACTORY)



TYPE		SPECIFICATION			QUANTITY	TOTAL STITCH COUNT	MANUFACTURERS
S	FULL WIDTH	24G	34"	102F	4	2560	SANDA
S	FULL WIDTH	28G	34"	102F	4	2976	FUYANG
S	FULL WIDTH	28G	34"	102F	8	2976	SANDA
S	FULL WIDTH	32G	34"	102F	15	3412	SANDA
S	FULL WIDTH	36G	34"	102F	10	3816	FUYANG
S	FULL WIDTH	36G	34"	102F	20	3840	SANDA
W	-	28G	34"	72F	4	2976	FUYANG
W	FULL WIDTH	28G	34"	108F	20	2990	JUNLONG
W	-	32G	34"	72F	6	3408	FUYANG
W	FULL WIDTH	32G	34"	108F	20	3416	JUNLONG
W	FULL WIDTH	36G	34"	108F	10	3845	JUNLONG
W	-	40G	30"	96F	10	3744	FUYANG
<b>TOTAL</b>					<b>131</b>		



# ENTERPRISE EQUIPMENT (DYEING FACTORY)



**The dyeing factory has 23 sets of dyeing overflow tanks, 7 sets of molding machines and 10 sets of finishing machines, which can process polyester ammonia, nylon ammonia and blended fabrics.**





# ENTERPRISE EQUIPMENT (BONDING FACTORY)



The production equipment is Taiwan bonding machine, currently there are 5 units in production , to provide customers with different bonding products, including two-layer bonding and three-layer bonding.



# ● ENTERPRISE EQUIPMENT (TESTING LAB)



**The lab can hold all regular knitting fabric test, such as color fastness to wash and perspiration, crocking test, shrinkage, fabric strength, etc.**

# PRODUCT INTRODUCTION

ZHO  
NG  
U

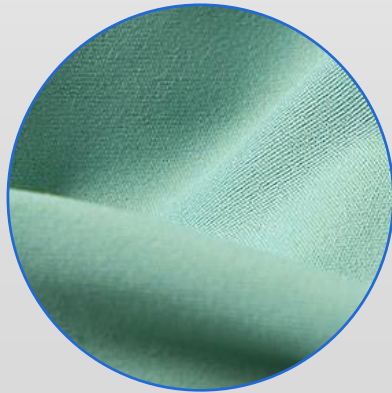
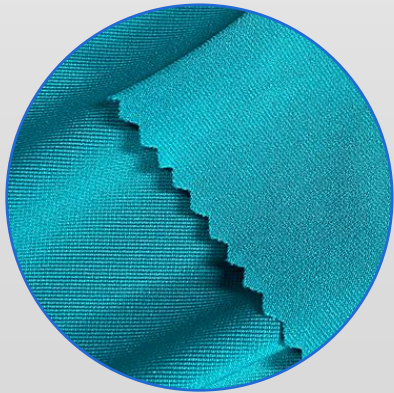
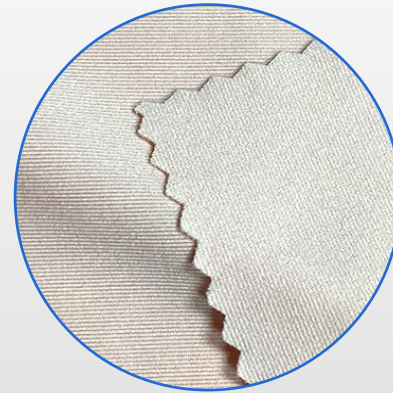
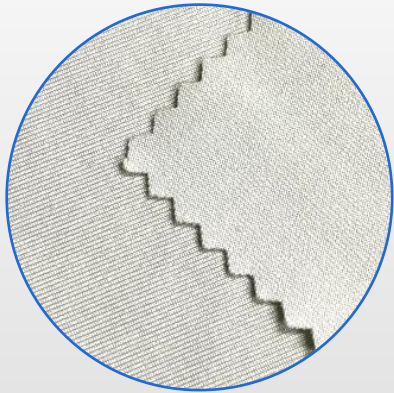


# CLASSIC HIGH ELASTICITY

---



# POLYESTER AMMONIA

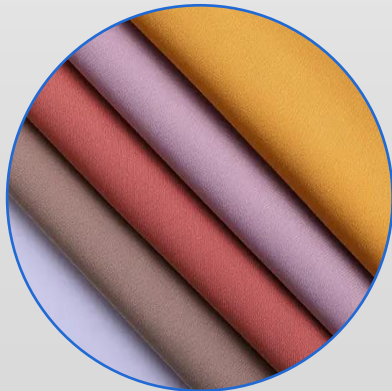
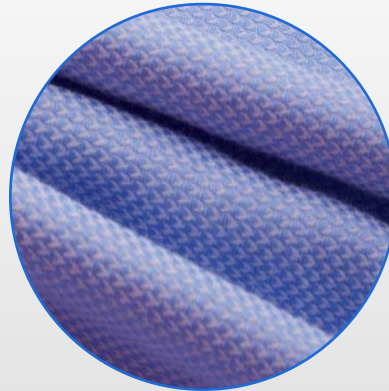


# NYLON AMMONIA





# BLENDED SPANDEX





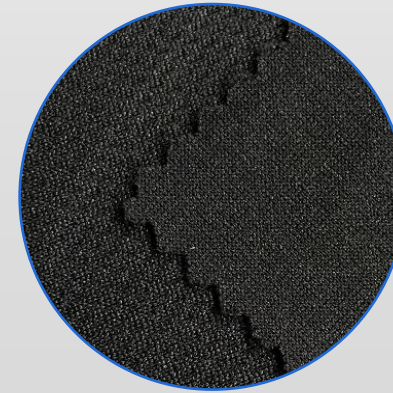
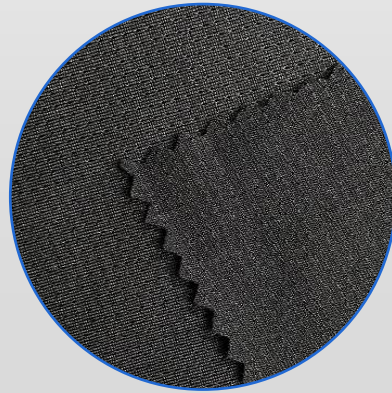
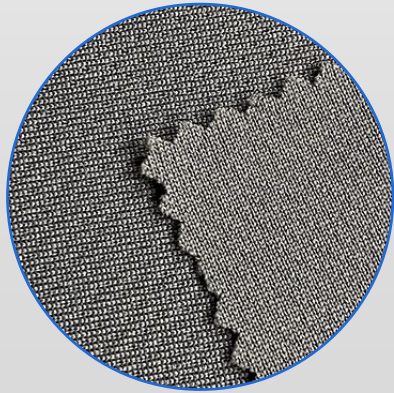
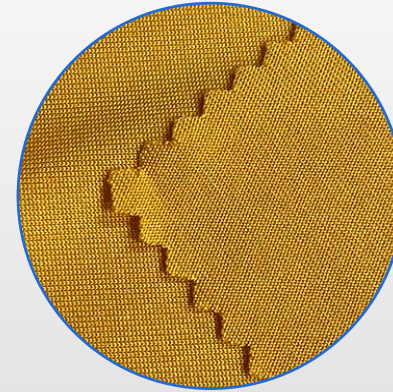
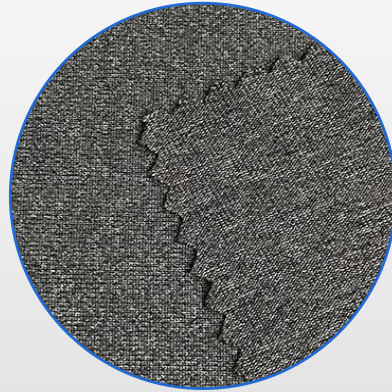
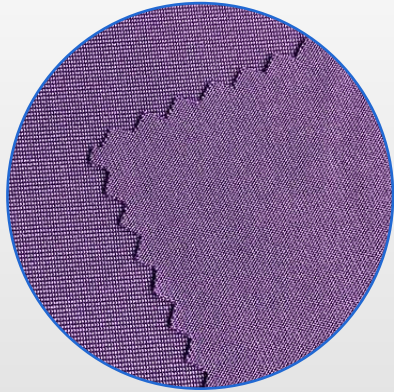


# SPORTS AND LEISURE

---



# POLYESTER AND POLYESTER AMMONIA

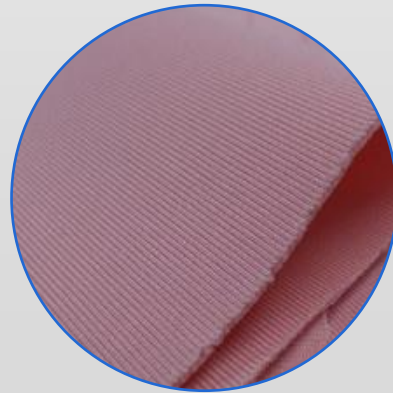


# NYLON AMMONIA POLYESTER COTTON BLEND





# POLYESTER/TENCEL/MODAL





## **FLEECE SERIES**

---



## Fluffy And Warm

Special fine brushing process, to achieve a fluffy and uniform effect. fleece dense can keep warm



## Durable Antistatic

Conductive blended yarn implanted inside, with durable antistatic effect, first-class quality OF GB standard



## Lightweight And Soft

Special finishing process, lightweight and warm, soft and breathable, no weight-bearing, freedom of movement



## Diverse Styles

Variety of colors and styles, with youth and actively styling



**Simplify and lightweight,  
can wear as under layer  
and outwear**



**Athleisure and  
Commuter Fashion**



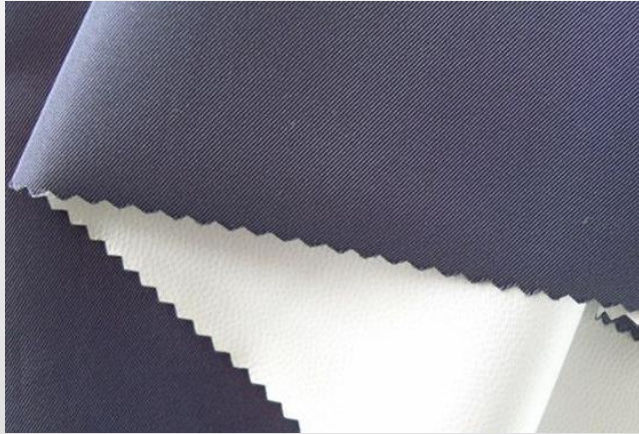
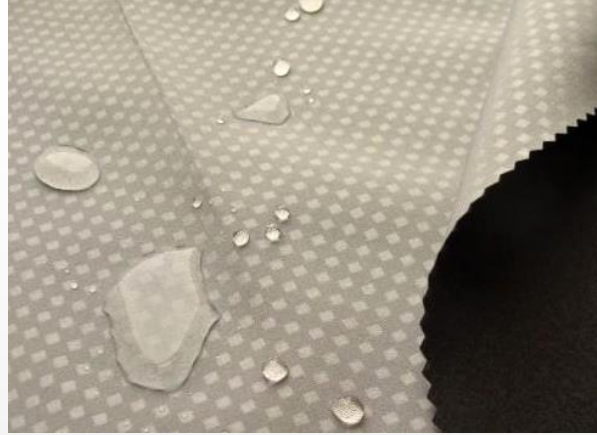
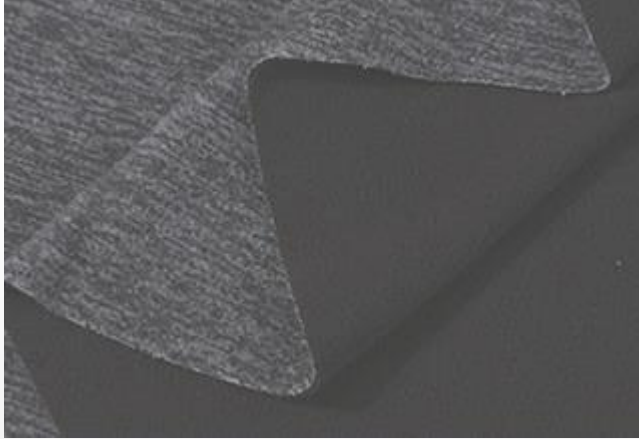
**BONDING  
TECHNOLOGY**



# **BONDING TECHNOLOGY SERIES**

---





**Bonding technology fabric with both function of waterproof and moisture breathable, can exhaust the sweat and moisture generated by human movement outside, and the rain and snow of the external environment can not enter inside**





## Feature:

Weather Proof

High tenacity

High moisture permeability



# THANK YOU



**MAKE SPORTS WONDERFUL**

ADDRESS : No. 12, Rongsheng Road,  
Changkun Industrial Park, Changshu City, Suzhou  
WEBSITE : [www.zztextile.com](http://www.zztextile.com)